

# Welcome to the TOWN OF HARRISBURG

## **IMPORTANT NUMBERS TO REMEMBER:**

Animal Control	704-920-3288
Board of Elections	704-920-2860
Cabarrus Co Water/Sewer Authority	704-786-1783
Cannon Memorial Library Concord	704-920-2050
Chamber of Commerce	704-782-4000
City of Concord	704-920-5555
Duke Power Company	800-777-9898
Harrisburg Library	704-455-2094
Harrisburg Post Office	704-454-7432
<b>Harrisburg Town Hall</b>	<b>704-455-5614</b>
Harrisburg Fire Department	704-455-3574
Harrisburg Parks & Recreation	704-455-7275
Hazardous Waste Facility	704-920-3278
Health Alliance	704-920-1000
Landfill	704-920-2950
NC Department of Transportation	704-436-9316
NC Driver's License	704-782-7214
NC License Plate Agency Concord	704-723-4991
Planning & Zoning	704-455-5614
Public Service Co. of NC (gas)	877-776-2427
<b>Public Works Dept.</b>	<b>704-455-4719</b>
Register of Deeds	704-920-2112
Republic Services (Trash & Recycle)	800-235-2583
Sheriff's Department	704-920-3000
Tax Collector (Cabarrus County)	704-920-2166
Union Power	704-289-3145
Windstream (Telephone)	866-445-3402



*Customer Service can help you with  
many questions and concerns.*

*Call {704} 455-5614 with:*

- *Water/Sewer questions*
- *To schedule a Bulk Item pick up*
- *Trash and Recycle questions*
- *Privilege Licensing*
- *Planning & Zoning issues*
- *Code Enforcement concerns*

***Town of Harrisburg  
PO Box 100  
4100 Main Street ~Suite101  
Harrisburg, NC 28075***

***{704}455-5614  
{704}455-1206 FAX***

***WWW.HARRISBURGNC.ORG***



## **YARD WASTE COLLECTION GUIDELINES**

\*Must be loose (not bagged) and placed behind the curb of the residence that generated the yard waste (not in the road, but as close as practical, within 4-6 feet).

\*Please be mindful that it can take several days to cover the entire town, therefore your yard waste can only be collected once a week.

\*Leaves and grass cannot be mixed with sticks, rocks, dirt, brush, paper, etc. If other items are mixed with the leaves and grass, the entire load cannot be picked up.

\*Brush consists of shrubs, flowers, and plants.

\*Limbs cannot exceed 6 ft. in length and must be stacked loosely with cut ends toward the street.

\*The pile must also be at least 8 feet from any sign, water meter, mailbox, or other stationary object, and away from any low overhead lines.

\*If you have less than a truckload there is no charge for collection. If you have enough for a truckload (16ft long, 6ft wide and 4ft high) there will be \$100 fee. Please make arrangements with Town Hall for payment.

Waste generated by private landscaping contractors will not be collected unless arranged by the homeowner for a fee. No debris created by commercial operations will be collected.

**The Town reserves the right to refuse collection of yard waste for failure to comply with the guidelines listed above.**

**The property owner will receive a written notice if collection is refused.**

**All questions regarding this service should be directed to Customer Service at {704} 455-5614.**

## **Yard Waste Collection**

The Public Works Department collects yard waste on a weekly basis.

### **GRASS & LEAF COLLECTION SCHEDULE**

#### ***MONDAY***

Valhalla, Hillcrest, Willow, Whitefield, Timber Forest, Old part of Town from Morehead to Roberta Road, Rocky River Crossing, Harrisburg Estates, Providence Manor, College Park, River Hills, Sequoia Hills, Heatherstone, Bridge Pointe, Flowers Farms, Stallings Farm, Hoffner Dr., Stallings Road, Alexander Hills, Robinson Church Road, and Hickory Ridge Road.

#### ***TUESDAY***

Magnolia Springs, Abbingdon, Litchfield Village, Frances Haven, Kensington Forest, Clarehaven, Windsor Forest, Fenton Dell, Wills Run, Orchard Park, Camelot, Huntwick, Farmington Ridge, Coventry, Bentley Hills, Oakley, Henderson Circle, Forest ST., Roberson Ave, Rocky River Crossing Road.

#### ***THURSDAY***

Canterfield and Hawthorne

### **LIMB & BRUSH COLLECTION SCHEDULE**

#### ***MONDAY MORNING***

Valhalla, Hillcrest, Willow, Whitefield, Timber Forest, Old Part of Town from Morehead Road to Roberta Road.

#### ***MONDAY AFTERNOON***

Rocky River Crossing, Harrisburg Estates, College Park, River Hills.

#### ***TUESDAY MORNING***

Sequoia Hills, Heatherstone, Flowers Farms, Stallings Farms, Hoffner Dr., Stallings Road, Alexander Hills, Roberson Church Road, Hickory Ridge Road.

#### ***TUESDAY AFTERNOON***

Clarehaven, Windsor Forest, Fenton Dell, Wills Run, Orchard Park, Camelot.

#### ***THURSDAY MORNING***

Huntwick, Farmington Ridge, Coventry, Bentley Hills, Oakley, Henderson Circle, Forest St., Roberson Ave. Please keep in mind that The Public Works Dept. will do their best to keep this schedule, however, there are times when the workload will delay your pickup.

### **ONCE A MONTH LIMB & BRUSH COLLECTION\***

Providence Manor, Bridgepointe, Magnolia Springs, Abbingdon, Kensington Forest, Litchfield, Frances Haven, Canterfield Estates, Rocky River Crossing Road, Hawthorne

\*The neighborhoods listed will be provided brush & limb collection service once a month on the last week of the month due to the small amounts of debris. This schedule does not affect leaves & grass collection service.

## Bulk Item Collection Guidelines:

ALL REQUESTS FOR BULK ITEM COLLECTION MUST BE SUBMITTED TO CUSTOMER SERVICE AT 704-455-5614 BEFORE 5PM THE TUESDAY PRIOR TO THE WEDNESDAY COLLECTION.

Bulk items that will be collected by scheduled pickup are:

- Small amounts of carpet and padding.
- Small amounts of shingle or construction materials.
- White goods (washers, dryers, refrigerators, dishwashers, etc.)
- Furniture (beds, sofas, lawn chairs, tables, lighting fixtures, etc.)
- Large boxes (cardboard/pasteboard, broken down and stacked).
- Metal items (lawn care equipment, playground equipment, etc.). All fluids must be drained. Large items such as playground equipment must be disassembled. Lawn mowers will be drained of all gas & oil and have tires removed.
- Doors, windows & decking.

The following bulk items WILL NOT be picked up:

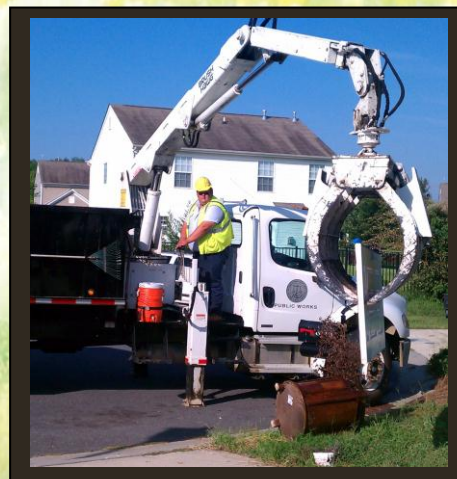
- Household garbage
- Tires, batteries, oil, paint, or liquid toxic materials
- Dead animals
- Demolition debris, dirt, rock or brick, sod, pavement or concrete
- Electronics, such as computer monitors and TVs (as of July 1, 2011 per new legislation)

All bulk items shall be placed 8 ft. from mail boxes & signs, landscape, or other stationary objects and overhead lines.

**The Town reserves the right not to handle any material that it deems unsafe for its employees!**

All bulk items pickups are collected on Wednesday of each week, or as soon as possible thereafter depending on current workloads.

***Bulk Item Collection is limited to once per week.***



# Water & Sewer Information

## PAYMENT TERMS:

All bills are due and payable upon receipt. It is the customer's responsibility to pay their bill by the 15<sup>th</sup> of the month. If payment is not received by the 15<sup>th</sup>, a \$10 late fee will be added. If the account is not paid in full by the 25<sup>th</sup> of the month, service will be disconnected without further notice and a fee of \$25 will be charged before service is reconnected. If payment is received after 4:00pm, the reconnect fee is \$50. Reconnection will be received in a reasonable amount of time, not to exceed 24 hours.

## QUESTIONS?:

Please call Customer Service regarding your water/sewer bill at: (704) 455-5614.

Our office is open Monday - Friday  
8:00am – 5:00pm

## PAYMENT OPTIONS:

\***Mail** with check or money order.

\***Automatic Draft** from your checking. (Contact Customer Service for more details).

\***In Person** at Town Hall, 4100 Main Street, Suite 100, with cash, check, money order, or debit/credit\*.

\***Online** with debit/credit\* on our website:

[www.harrisburgnc.org](http://www.harrisburgnc.org)

\***Drop Box** located on the front of the Town Hall Building.

*A \$25 NSF fee is charged for each returned check or automatic draft.*

**\*ALL DEBIT/CREDIT CARD PAYMENTS MADE ONLINE, BY PHONE, OR IN PERSON WILL INCUR A \$2.50 SERVICE FEE.**

The Town of Harrisburg is not responsible for failure of the US Postal Service to deliver bills.

# TRASH COLLECTION

Trash collection service is performed every Tuesday. If a holiday falls during the week, your trash collection may be a day late. If you have any questions, call Customer Service at 704-455-5614.

Only household garbage will be collected. Please curb your container properly because the collection is fully automated. Place your roll out within 5 ft. of the road. Do not place the roll out next to your mailbox. Make sure it is clear of trees and overhanging limbs. Curb your roll out container the night before because collection begins at 6 a.m. Make sure the wheels of your roll out are away from the road. (The lid hinge should be placed away from the road.) Place everything in the roll out container. Do not place anything on top of roll out. Do not use your own cans. If you consistently have more than one roll out full, you need to request an additional container. This must be done at your cost; the Town provides one container per household.

## Items Not For The Landfill

Waste Oil: Most service stations have waste oil tanks and will usually accept waste oil at no charge. Waste oil is used in making asphalt and can also be purified for re-use.

Paint: Remove lids to allow paint to harden. When paint has hardened, it may be placed in a roll out container.

Batteries: When your new battery is purchased the seller will take the old one. Most auto parts stores will take an old battery even when you do not buy a new battery.

Tires: When new tires are purchased, the seller will take old tires. Most tire dealers will take tires if you did not purchase any for free or a small fee.

Electronics: E-waste may contain toxic chemicals and has been banned from North Carolina landfills. Electronics can be taken to recycling centers. Local facilities that will take these items for free are: Cabarrus County Household Hazardous Waste (704-920-3278) or Cabarrus County Construction and Demolition Landfill (704-920-2950).

**\*\*Please note: If your recycling does not fit inside your bin, Allied/Republic will not pick it up. Extra cardboard can be scheduled for bulk item pick up. Call: 704-455-5614 to schedule. \*\***

## Do's of Recycling

- Metal Cans (Aluminum and Steel): Includes soft drink, beer and food cans. Rinse out cans.
- Newspapers, Office Papers, Paper Grocery Bags, and Cardboard: Includes all daily papers, copy papers and form feed computer papers, paper grocery store bags. Only small amounts of flattened corrugated cardboard (2ft. x 3ft.).
- Junk Mail, Magazines, Catalogs, and Phone Books: All junk mail and shiny paper inserts and magazines can be recycled.
- Plastic Containers (PETE #1 or HDPE #2): Include soft drink bottles, liquor bottles, milk jugs and detergent bottles. IMPORTANT: To make sure container is acceptable, check the bottom. If you see the recycling symbol circling the number 1 or 2, it is recyclable. Rinse out, flatten, and remove caps; place in recycling bin.
- Glass Bottles and Jars: Clear, green and brown glass is acceptable. Remove caps and lids and rinse out.

## Don'ts of Recycling

- No Plastic Grocery Bags, Egg Cartons, or Styrofoam: Only plastics Labeled 1 or 2 are acceptable. No Plastic Grocery Bags regardless of the number.
- No Coat Hangers, Lids, or Other Scrap Metal: (Other scrap metal includes hub caps, pots and pans.)
- No Books: No hard back books or text books.
- No Ceramics, Mirrors, Window Frames, Plate Glass or Light Bulbs: Only glass bottles and jars are recyclable.
- No Glassware: Only glass bottles and jars are recyclable.
- No Large Boxes: If you have a large amount of boxes that will not fit in your roll out or boxes from moving, call 1-800-235-2583 for a special pickup. We have to throw away some cardboard due to the limited capacity of our recycle trucks.